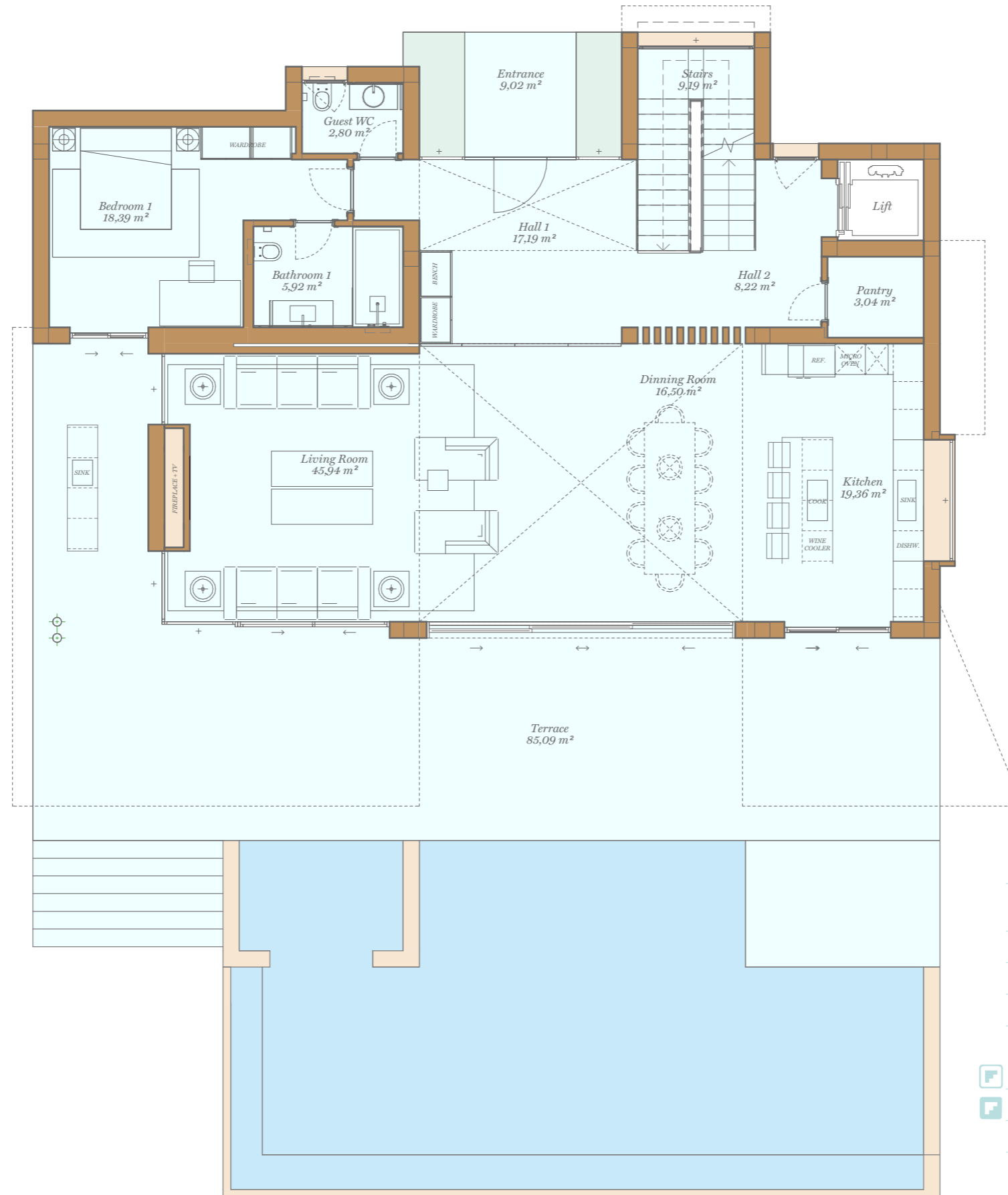


# Villa Monet

Int.: 611,93 / Ter.: 237,92

4 Bedroom

Ground Floor



Site Plan



## Ground Floor

Indoor Usable Area	146,55 m <sup>2</sup>
Terrace Usable Area	94,11 m <sup>2</sup>
Total Usable Area	240,66 m <sup>2</sup>
Total Usable Area (D 218/2005)	161,21 m <sup>2</sup>
Indoor Constructed Area	164,52 m <sup>2</sup>
Terrace Constructed Area	94,09 m <sup>2</sup>
Total Constructed Area	258,61 m <sup>2</sup>



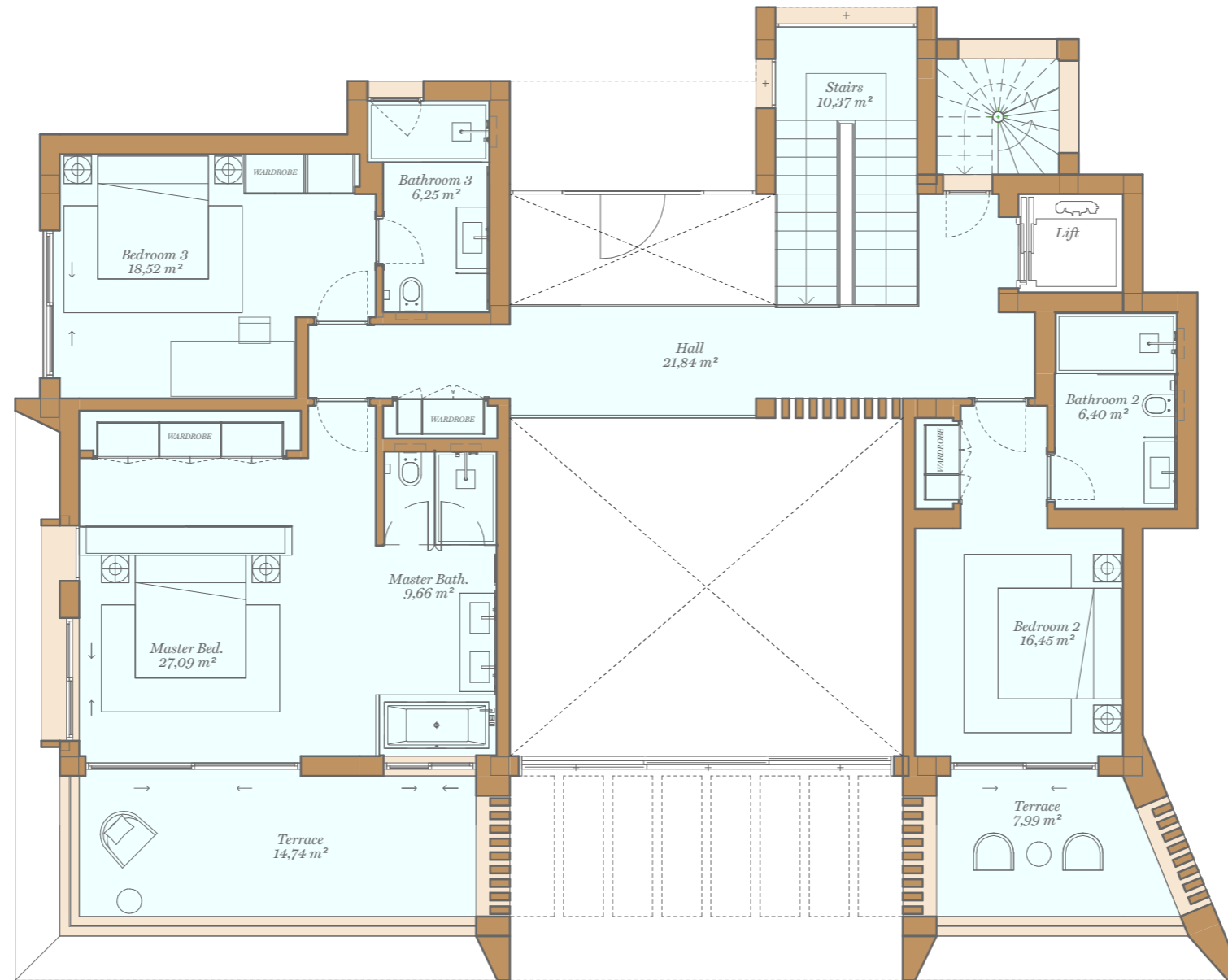
This document is for information only. The areas and dimensions shown are approximate and can be modified for technical reasons and/or administrative issues. All furniture shown is for illustrative purposes only. The lighting is designed in line with the furniture layout displayed. This is a generic villa layout, for the actual layout of your plot, please make contact with sales office. Sauna Room at basement level is optional and subject to particular buildability available at each plot.

## Villa Monet

Int.: 611,93 / Ter.: 237,92

4 Bedroom

First Floor



Site Plan



### First Floor

Indoor Usable Area	116,58 m <sup>2</sup>
Terrace Usable Area	22,73 m <sup>2</sup>
Total Usable Area	139,31 m <sup>2</sup>
Total Usable Area (D 218/2005)	128,24 m <sup>2</sup>

Indoor Constructed Area	180,44 m <sup>2</sup>
Terrace Constructed Area	31,42 m <sup>2</sup>
Total Constructed Area	211,86 m <sup>2</sup>

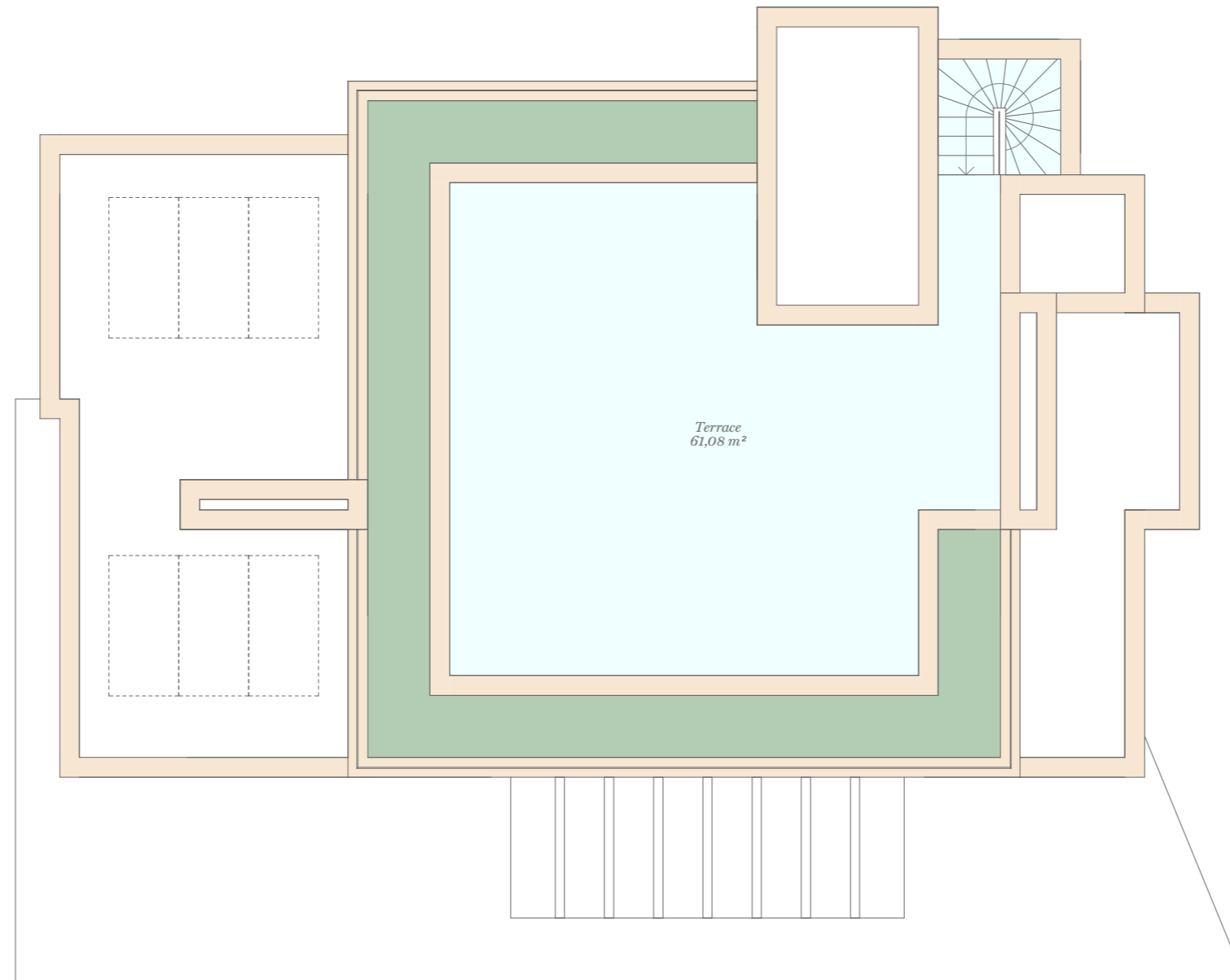


# Villa Monet

Int.: 611,93 / Ter.: 237,92

4 Bedroom

Roof Floor



Site Plan



## Roof Floor

Indoor Usable Area	- m <sup>2</sup>
Terrace Usable Area	61,08 m <sup>2</sup>
Total Usable Area	61,08 m <sup>2</sup>
Total Usable Area (D 218/2005)	- m <sup>2</sup>

Indoor Constructed Area	- m <sup>2</sup>
Terrace Constructed Area	112,40 m <sup>2</sup>
Total Constructed Area	112,40 m <sup>2</sup>

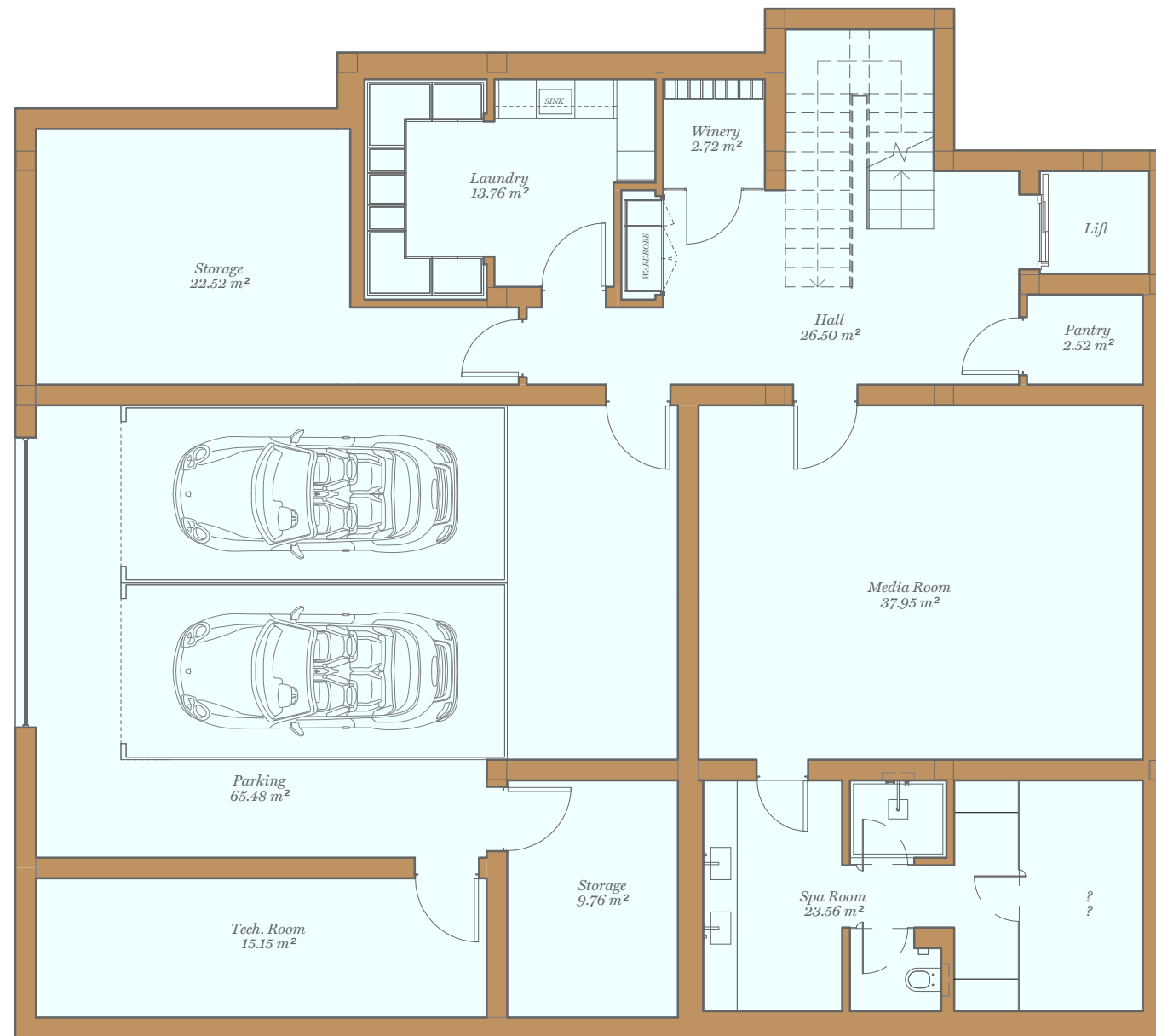


# Villa Monet

Int.: 611,93 / Ter.: 237,92

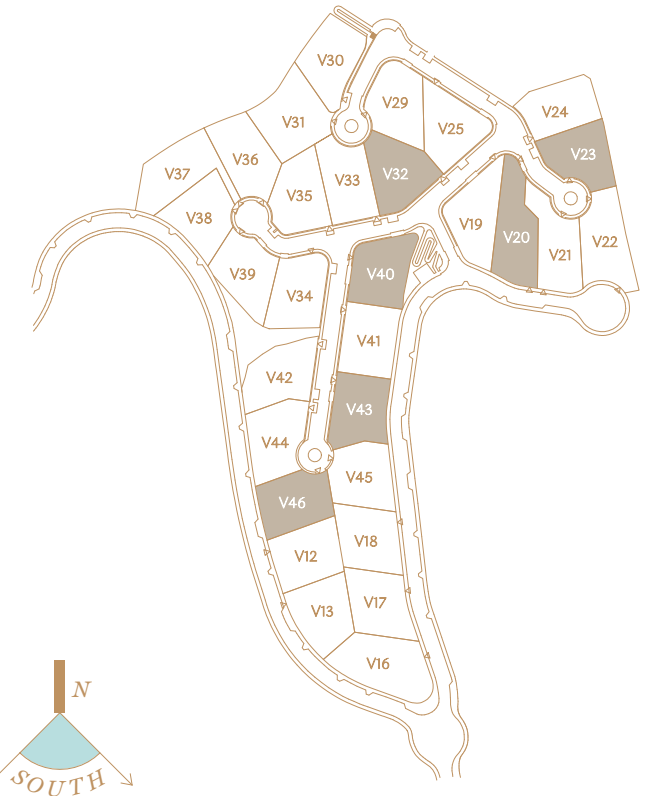
4 Bedroom

Basement



266,97 344,95 237,92 4 4.5 2

Site Plan



## Basement

Indoor Usable Area	219,92 m <sup>2</sup>
Terrace Usable Area	- m <sup>2</sup>
Total Usable Area	219,92 m <sup>2</sup>
Total Usable Area (D 218/2005)	241,91 m <sup>2</sup>

Indoor Constructed Area	266,97 m <sup>2</sup>
Terrace Constructed Area	- m <sup>2</sup>
Total Constructed Area	266,97 m <sup>2</sup>

