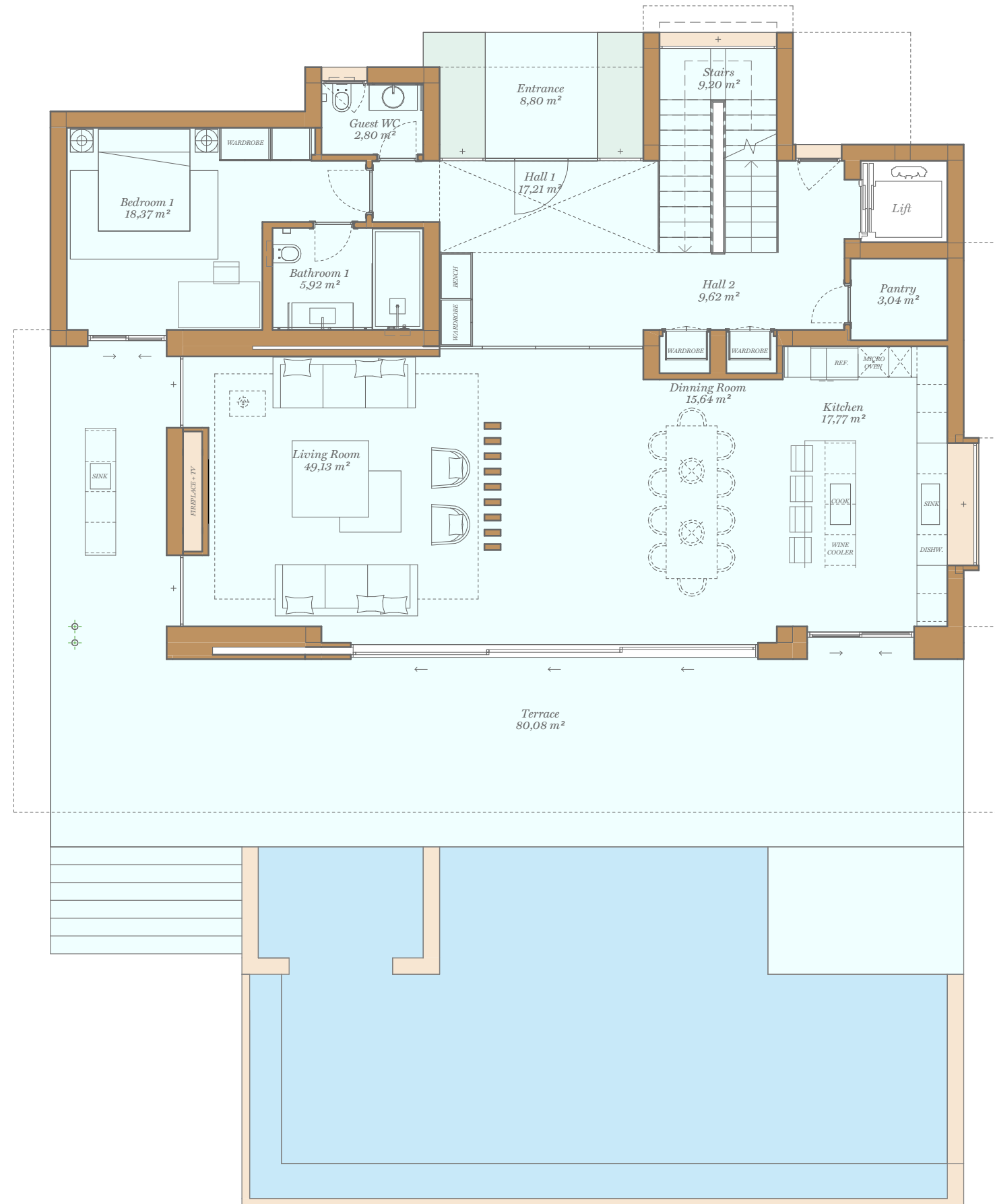


# Villa Klimt

Int.: 628,15 / Ter.: 257,53

5 Bedroom

Ground Floor



Site Plan



## Ground Floor

Indoor Usable Area	148,70 m <sup>2</sup>
Terrace Usable Area	88,88 m <sup>2</sup>
Total Usable Area	237,58 m <sup>2</sup>
Total Usable Area (D 218/2005)	163,57 m <sup>2</sup>
Indoor Constructed Area	165,58 m <sup>2</sup>
Terrace Constructed Area	89,09 m <sup>2</sup>
Total Constructed Area	254,67 m <sup>2</sup>



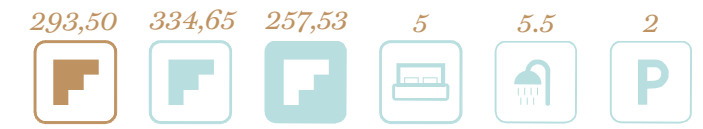
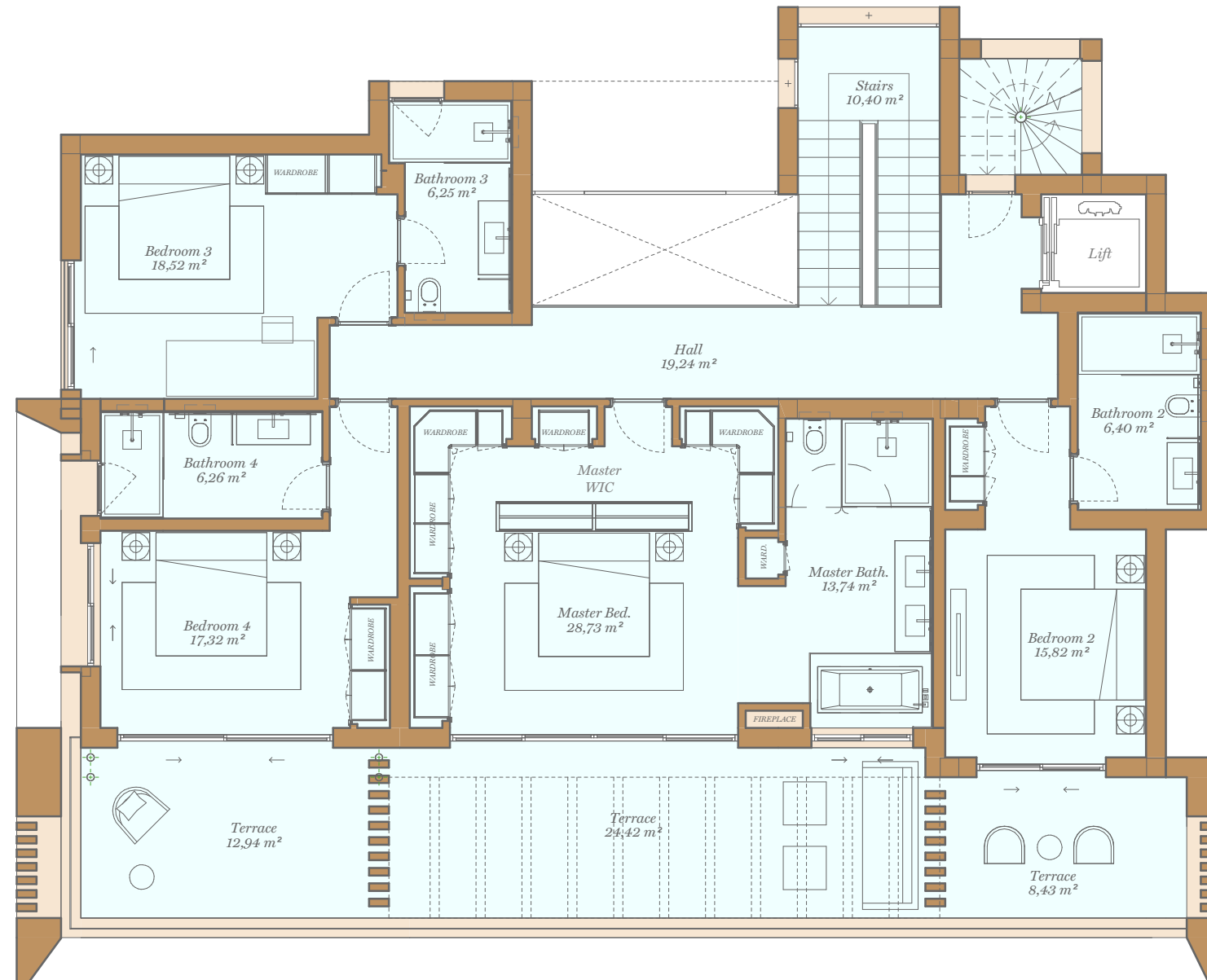
This document is for information only. The areas and dimensions shown are approximate and can be modified for technical reasons and/or administrative issues. All furniture shown is for illustrative purposes only. The lighting is designed in line with the furniture layout displayed. This is a generic villa layout, for the actual layout of your plot, please make contact with sales office. Sauna Room at basement level is optional and subject to particular buildability available at each plot.

# Villa Klimt

Int.: 628,15 / Ter.: 257,53

5 Bedroom

First Floor



Site Plan



## First Floor

Indoor Usable Area	142,68 m <sup>2</sup>
Terrace Usable Area	45,80 m <sup>2</sup>
Total Usable Area	188,48 m <sup>2</sup>
Total Usable Area (D 218/2005)	156,95 m <sup>2</sup>

Indoor Constructed Area	169,07 m <sup>2</sup>
Terrace Constructed Area	56,04 m <sup>2</sup>
Total Constructed Area	225,11 m <sup>2</sup>

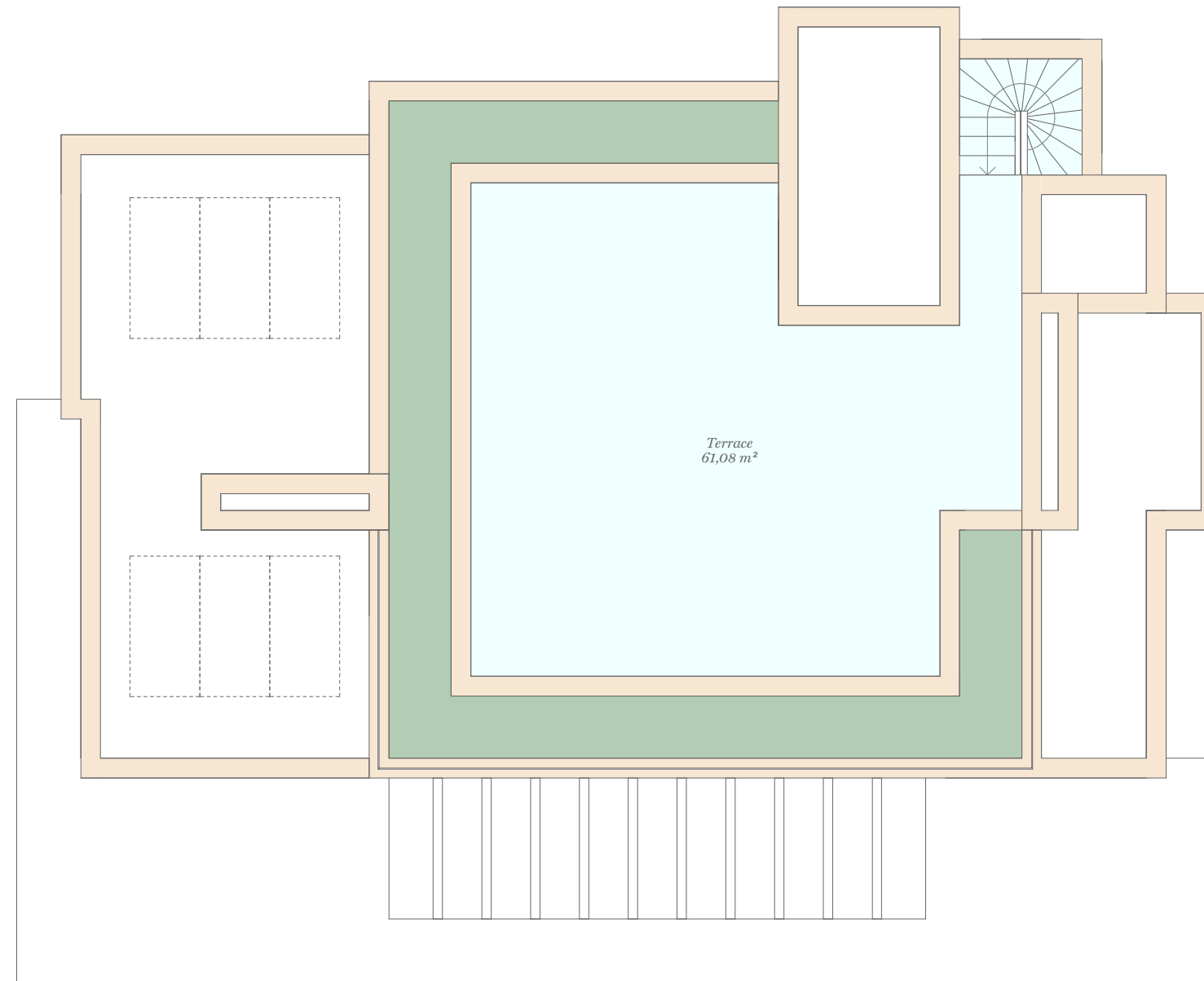


# Villa Klimt

Int.: 628,15 / Ter.: 257,53

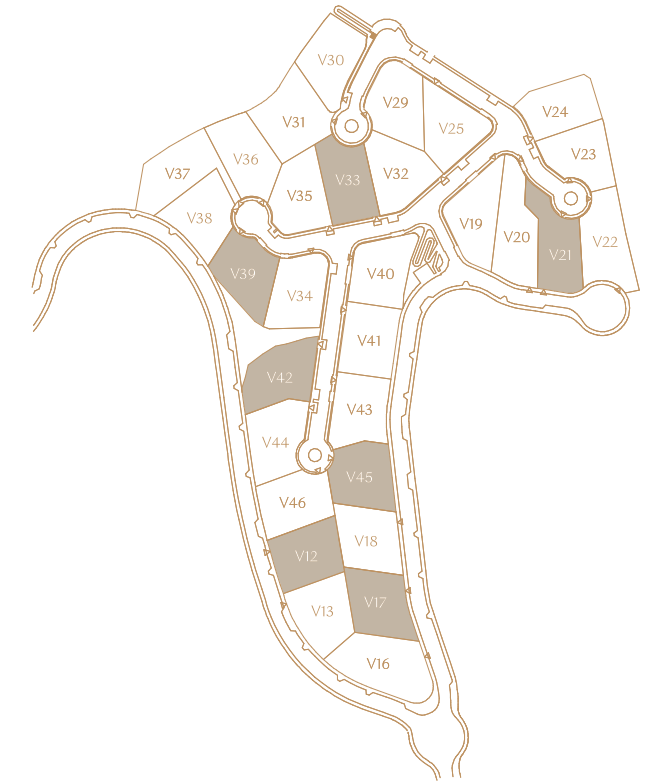
5 Bedroom

Roof Floor



293,50 334,65 257,53 5 5.5 2

## Site Plan



## Roof Floor

Indoor Usable Area	- m <sup>2</sup>
Terrace Usable Area	61,08 m <sup>2</sup>
Total Usable Area	61,08 m <sup>2</sup>
Total Usable Area (D 218/2005)	- m <sup>2</sup>

Indoor Constructed Area	- m <sup>2</sup>
Terrace Constructed Area	112,40 m <sup>2</sup>
Total Constructed Area	112,40 m <sup>2</sup>



# Villa Klimt

Int.: 628,15 / Ter.: 257,53

5 Bedroom

Basement



293,50 334,65 257,53 5 5.5 2

Site Plan



## Basement

Indoor Usable Area	245,64 m <sup>2</sup>
Terrace Usable Area	- m <sup>2</sup>
Total Usable Area	245,64 m <sup>2</sup>
Total Usable Area (D 218/2005)	270,20 m <sup>2</sup>

Indoor Constructed Area	293,50 m <sup>2</sup>
Terrace Constructed Area	- m <sup>2</sup>
Total Constructed Area	293,50 m <sup>2</sup>

